



Zimbra Collaboration Server Migration Wizard for IBM Lotus Domino

ZCS 8.7

April 2016

Legal Notices

Copyright © 2005-2016 Synacor, Inc. All rights reserved. This product is protected by U.S. and international copyright and intellectual property laws. "Zimbra" is a registered trademark of Synacor, Inc. in the United States and other jurisdictions. You may not alter or remove any trademark, copyright, or other notice from copies of the content. All other marks and names mentioned herein may be trademarks of their respective companies.

Synacor, Inc.
40 La Riviere Drive, Suite 300
Buffalo, New York 14202

www.synacor.com

ZCS 8.7

April 2016

1 Using the ZCS Migration Wizard

The Zimbra Collaboration Server Migration Wizard for Lotus Domino (ZCS Migration Wizard) is used to migrate IBM Lotus® Domino server email accounts to the Zimbra Collaboration Server (ZCS) and to import the email, calendar, and address book information for the selected Lotus Domino users. The import process replicates the user's Lotus Domino folder hierarchy, importing email messages, calendars, address books, and distribution lists from the Lotus Domino server. Any keywords are converted to tags in ZCS.

Accounts from IBM Lotus Domino version 5.0.8 and later can be migrated.

During the migration, the ZCS Migration Wizard performs the following tasks:

- Creates the user account on the ZCS server, if it does not already exist
- Imports email messages, attachments, calendars, and address books
- Creates a log file for troubleshooting any import errors or warnings

Note: *Email messages, calendars, and address books (including distributions lists) are imported from the Lotus Domino server. Other Lotus Notes® types, customized templates, delivery failure reports, meeting request and responses, Global Address List (GAL), to-do list, personal journal, and rules and alerts are not imported. Rich text in email messages is converted to plain text.*

Note: *64-bit operating system is supported if the system running the migration tools has a 32-bit version of the email client installed.*

Note: *If you set your computer's regional settings to a language other than English (United States), the migration tool might fail. Your regional settings are located on your computer at Control Panel>Regional and Language Options.*

Lotus Domino Requirements

The ZCS Migration Wizard utilizes the Lotus Notes Script Libraries. Therefore, you must run the ZCS Migration Wizard from a Microsoft® Windows® computer that has Lotus Notes R6 or later installed.

- In order for the ZCS Migration Wizard to conduct the migration, you must supply the ID file that has full administrative privileges on mailboxes to be migrated.
- The latest version of the Lotus dynamic link library (DLL) files must be installed.

Planning the Migration from Lotus Domino to ZCS

Before you attempt to migrate from the Lotus Domino server, create a communication plan to notify users about the new ZCS email program and to provide users with the new mail access information (ZCS URL, login name, and password to use).

It is recommended that you plan to perform the migration during off-peak use times. The Lotus Domino server does not need to be stopped in order to migrate accounts. Any emails that are sent to or delivered from Lotus Domino after the account is migrated are not saved in the ZCS mailbox.

- The ZCS Migration Wizard asks you questions in a series of dialog boxes about how to set up the new accounts. Before you start, you should determine:
 - Which domain the users' accounts will migrate to.
 - Whether to select individual accounts or select groups of accounts to import.

If Running Zimbra Proxy

If you are running Zimbra Proxy, and the **ZimbraPublicServiceHostName** has been set to proxy, you must change the local hosts file at the Windows machine that is running the Migration Wizard to point to the mailbox node where the admin user resides.

1. Go to the hosts file, which is usually located at **C:\WINDOWS\system32\drivers\etc**
2. Open the hosts file and add the following line:
x.x.x.x <your ZimbraPublicServiceHostName value here>
Where **x.x.x.x** is the IP address of the mailbox store with the admin user.
3. Save the file.

Considerations for Retaining Domain Name when Migrating

If your users use the Calendar application, and you are not migrating all users to ZCS at the same time, configure ZCS with the same domain name as used on the Lotus Domino server. When ZCS is configured with the same domain name, a user's existing email address will be retained when the account migrates to ZCS.

Meeting requests and appointments contain recipient information in the form of email addresses. After migration, if the organizer of an appointment updates an existing appointment or if recipients reply to an invitation, the email address of the original message receives the notification. If the email address has been changed, the notification is not received.

Configuring Migration Options

If using the ZCS Migration Wizard, after the accounts are created on the ZCS server the email messages, calendar entries, and contact information are imported. You then configure the following options for accounts being imported during the migration process:

- Import the content of **Junk Mail**? (yes or no)
- Import email messages received after <date>
- Should the new email address replace the Lotus Domino email address in all meetings organized by the user? <check box>
- Number of mailboxes to import simultaneously.

The import process contains a few assumptions regarding naming:

- Imports are by a single domain. For example, you might import users from **marketing.domain.com** on your Lotus Domino server to **marketing.zimbra.domain.com** on your ZCS server.
- The local part of the user's SMTP address in Lotus Domino becomes the first portion of the email address on the ZCS server. To continue the above example, a user who has an account for **joe@marketing.domain.com** on Lotus Domino would become **joe@marketing.zimbra.domain.com** on your ZCS server.

Using the ZCS Migration Wizard

Even though the ZCS Migration Wizard can be run from start to finish without stopping, Zimbra recommends that after the accounts are migrated you stop. Before proceeding, change the mail relay information to point to the Zimbra server instead of the Lotus Domino server. This will prevent any lost mail while the files are being imported.

Note: *After the files have been imported to the Zimbra server, you should verify that the import was successful before deleting the Lotus Domino accounts.*

Migrating Accounts and Importing Email

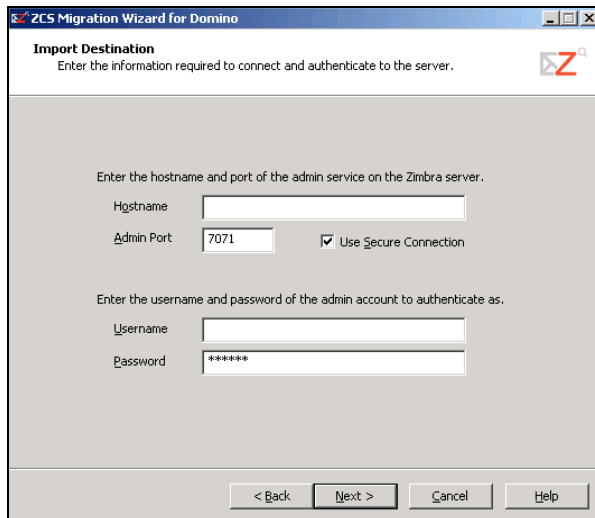
The ZCS Migration Wizard can be downloaded from the Zimbra Administration Download page on the Zimbra administration console.

1. From the Zimbra Administration Downloads page click the **ZCS Migration Wizard for Domino link** to download the ZCS Migration Wizard executable file to your computer.
2. Double-click on the ZCS Migration Wizard executable file. The **Welcome** dialog appears. Click **Next** to continue.
3. The **Import Destination** dialog displays. Enter Import Destination information.

To connect and authenticate to the server, enter:

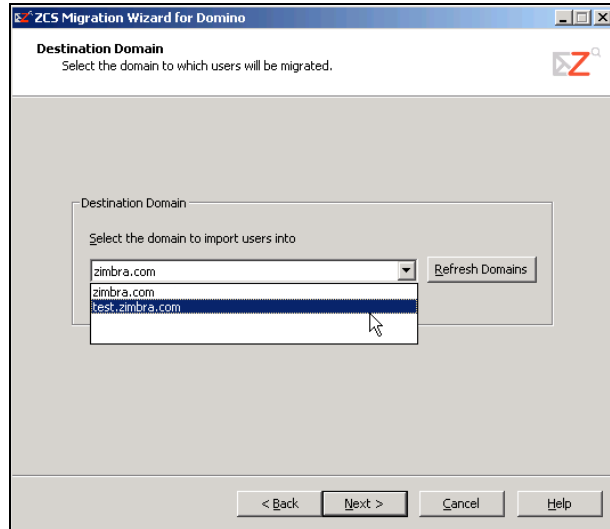
- **Host name.** This is the host name of the Zimbra server.
- **Admin Port.** The default admin services port is 7071.
- **Use Secure Connection (SSL)** is checked to establish a secure connection to the server port.
- **Username and Password.** This is the name and password of the administrator account on the Zimbra server.

Click **Next**.



The screenshot shows the 'Import Destination' dialog box of the ZCS Migration Wizard for Domino. The dialog has a title bar with the text 'ZCS Migration Wizard for Domino' and a Zimbra logo. Below the title bar, the text 'Import Destination' is followed by the instruction 'Enter the information required to connect and authenticate to the server.' The main area of the dialog contains two sections. The first section is titled 'Enter the hostname and port of the admin service on the Zimbra server.' and includes a 'Hostname' text box, an 'Admin Port' text box containing '7071', and a checked checkbox labeled 'Use Secure Connection'. The second section is titled 'Enter the username and password of the admin account to authenticate as.' and includes a 'Username' text box and a 'Password' text box containing '*****'. At the bottom of the dialog, there are four buttons: '< Back', 'Next >', 'Cancel', and 'Help'.

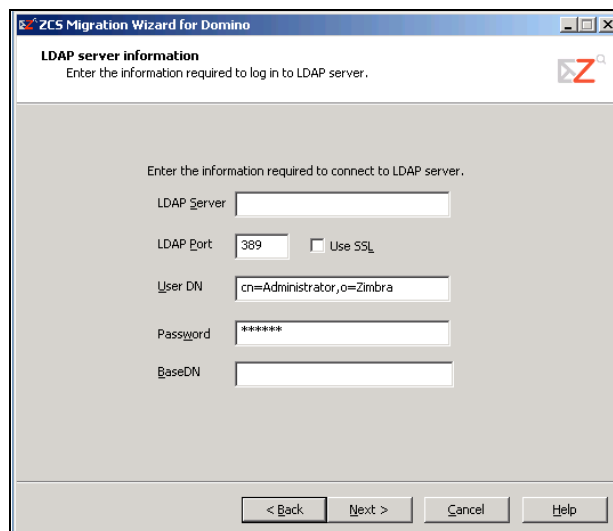
4. In the **Destination Domain** dialog, select the Zimbra domain name where accounts will migrate to.



Note: If you create the domain name after you started the ZCS Migration Wizard, click **Refresh Domains** to update the list from the Zimbra server.

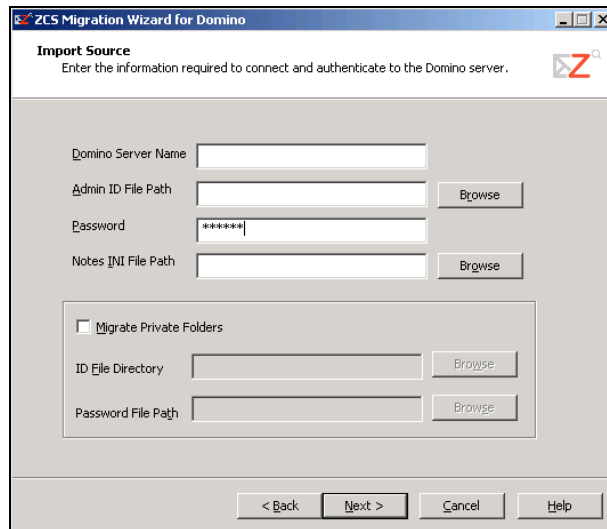
Click **Next**.

5. Enter the information necessary to connect to the LDAP server.



- **LDAP Server.** The internal or external LDAP server name.
- **LDAP Port.** The default is 389.

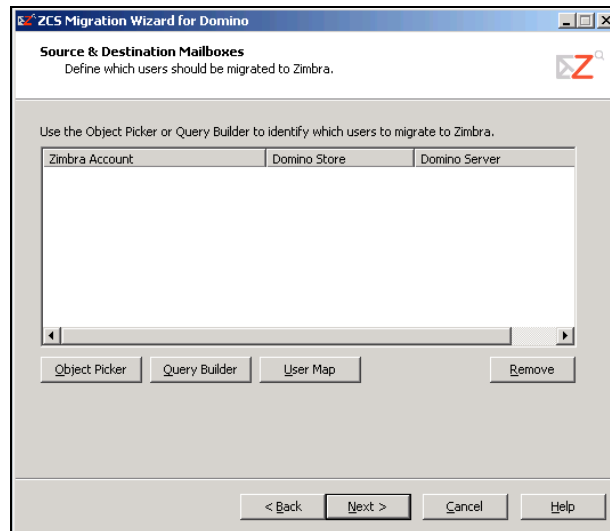
- **User DN and Password.** Enter the DN (Distinguished Name). If the LDAP is external, the DN is the LDAP user name and password. If the LDAP is on the Domino server, use your user name and password.
 - **BasDN:** Enter the base DN for LDAP's user accounts.
6. The **Import Source** dialog displays. If the ZCS Migration Wizard can determine the Domino server name, administration ID file path, and Lotus Notes INI file path, this information is displayed in the dialog. If this information is missing, enter the information.



- **Domino Server Name:** Name of the Domino server.
- **Admin ID File Path:** Path to the admin ID file which contains the admin configuration data.
- **Password:** Admin password.
- **Notes INI File Path:** Path to Notes INI file.
- **Migrate Private Folders:** Enable this option to migrate user's Lotus Domino private folders, and complete the following:
 - **ID File Directory:** Specify the path to the directory containing ID files of all the Lotus Domino users to be migrated. The names of the ID files should follow the format **<user shortname>.id**.
 - **Password File Path:** Specify the path to the file containing passwords for these ID files. The users and passwords should be specified in format **<user full name>:<password>**. The user full name format is **<username>/[<organization unit>]/<organization>**. For example, if the user is Joe, the organization is Zimbra and the organization unit is marketing, then the user full name is joe/marketing/zimbra.

Click **Next**.

7. In the **Source and Destination Mailboxes** dialog, define the users to be migrated to the Zimbra server. Choose one of the following ways to select users:
- **Object Picker**, to select specific users to migrate. Go to step a.
 - **Query Builder**, to select groups of users to migrate. Go to step b.

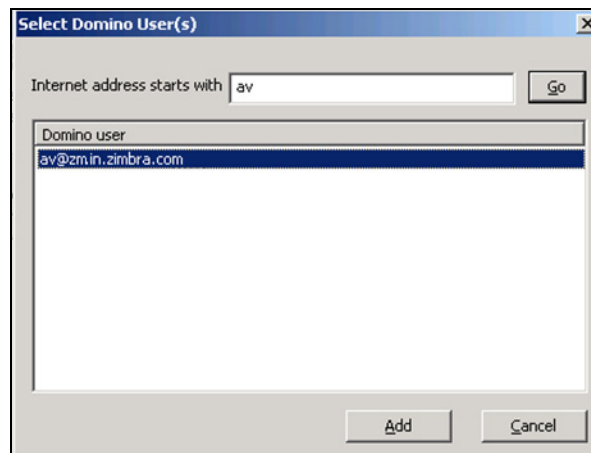


- a. Click **Object Picker** to select specific accounts to migrate.

In the **Internet address starts with** box, enter a few starting characters of the SMTP address to be migrated. The wildcard characters, * and ?, can be used.

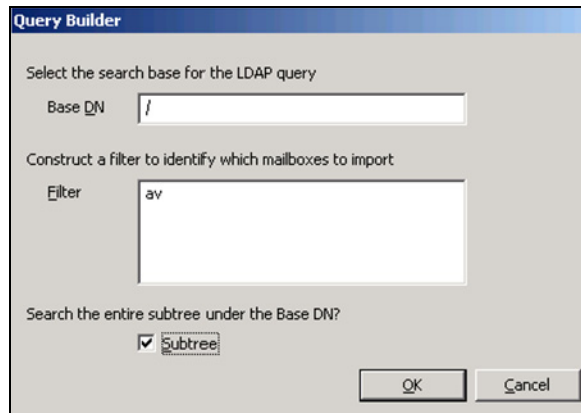
Click **Go**. All users whose SMTP address starts with the entered characters are listed. Select the users to migrate from the list.

Click **Add**.

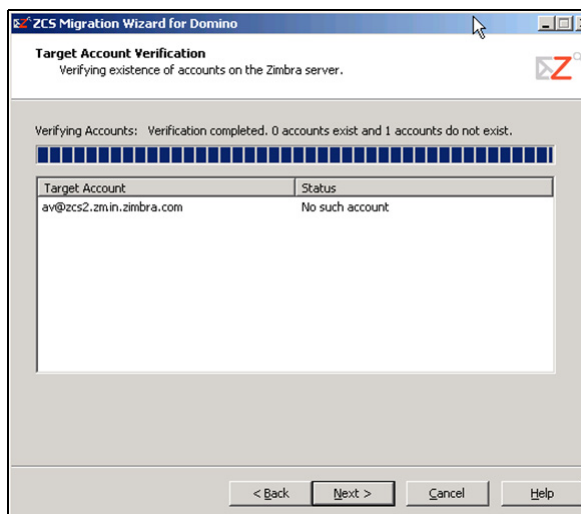


- b. Click **Query Builder**, to select groups of accounts to migrate.

In the **Query Builder** dialog, enter the search base for the LDAP query and construct the filter to identify which mailboxes to import.



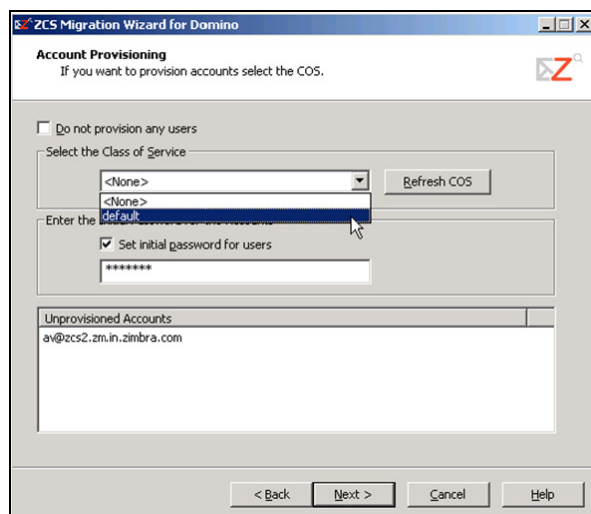
- c. Click **User Map** and in the dialog that opens, browse to the XML file created with the user mapping. Click **OK**.
8. The **Source & Destination Mailboxes** dialog now displays the Zimbra account name, the Lotus Domain server DN information and the Lotus Domino userDN information for accounts to be migrated. Review the information.
If any accounts should not be migrated, select the account and click **Remove**, otherwise click **Next** to continue.
9. The ZCS Migration Wizard now checks to see if these accounts exist on the Zimbra server. After checking all the accounts, the **Target Account Verification** dialog displays the number of accounts that exist and the number of accounts that do not exist on the Zimbra server. The accounts with the status of **No such account** will be created. Click **Next**.



10. The **Account Provisioning** dialog displays. All accounts with the status of **No such account** are shown in the **Unprovisioned Accounts** list box. Before creating these accounts, select the Class of Service (COS) that these accounts will be assigned and enter the default password for the accounts.

The COS defines the features and preferences for these accounts. Classes of Service that have been configured on the Zimbra server are listed. If you recently created a COS and it is not listed, click **Refresh COS**. New COSs are added to the list.

Important: Included in this list are two COSs called **default** and **None**. The COS named **default** refers to the default COS that was automatically created when Zimbra Collaboration Server is installed. The COS named **None** is used to represent a COS configured for the domain that is being migrated. Configuring a domain COS is optional. Select **None** to provision the accounts with the COS assigned to the domain. If **None** is selected and the domain has not been configured with a specific COS, the COS named **default** is automatically assigned.



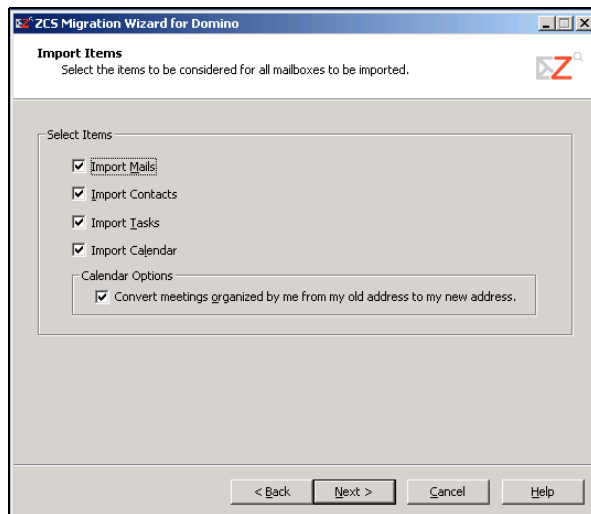
In the **Initial Password** field, enter a default password. This is the password for every account that is created.

- If password is not specified at the time of provisioning, after the migration you can either:
 - Create passwords for each account using either the administration console or the `zmprov` CLI utility.
 - Configure ZCS authentication to be external against the LDAP directory. Users can continue to use their existing password.

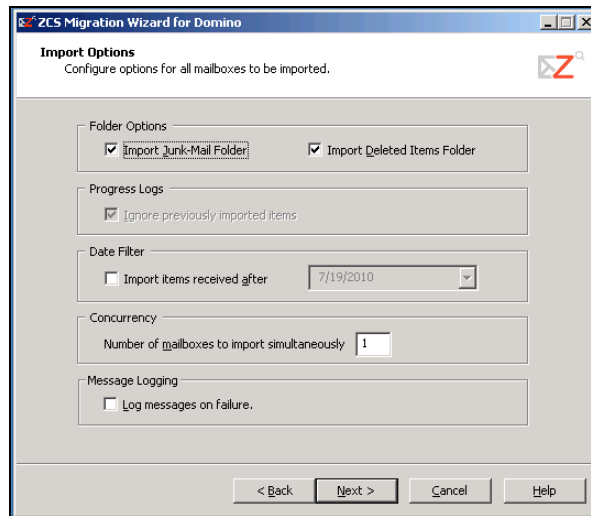
Click **Next**. The listed accounts are provisioned.

Note: *If you do not want to create any of the accounts from this list, check **Do not provision any users**, and click **Next**. No accounts are created on the Zimbra server.*

11. You can view the results of account provisioning in the Provisioning Accounts dialog. The Provisioning Result column shows the status of account creation. Any account not created is shown as **Unable to create account**.
The provisioning of email accounts on the Zimbra server is complete. Before proceeding you should change the mail relay information for these users to point to the Zimbra server instead of the Lotus Domino server. Any new email messages are sent to the Zimbra mailboxes.
12. The **Import Items** dialog is used to select which parts of users accounts should be imported.



- **Import Mails.** Select this item to import users' mail.
 - **Import Contacts.** Select this item to import users' contact folders.
 - **Import Tasks.** Select this item to import users' task folders.
 - **Import Calendar.** Select this item to import users' calendars.
 - **Calendar Options.** If you chose to import users' calendars, you can specify whether to convert meetings organized by users to their new addresses.
13. The **Import Options** dialog is used to set rules about what files should be imported.



- **Folder Options.** The checkboxes for **Import Junk-Mail Folder** and **Import Deleted Items Folder** determine whether or not to import mail currently in those Junk Mail and Trash folders respectively.
- **Progress Log.** The checkbox for **Ignore previously imported items** can be used in cases where an earlier import operation was interrupted. If checked, the import process picks up where it left off, rather than importing duplicates.

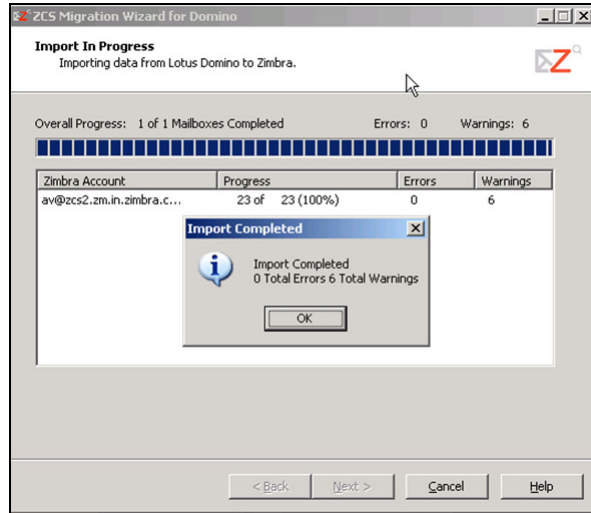
The wizard prevents import of duplicates by checking the progress logs for every user's mailbox that has been imported before. If the message ID in the progress log matches an existing message, that message is not imported, hence preventing duplicate import of messages.

- **Date Filter.** Check the **Date Filter** checkbox to import mail only after a certain date. This lets you discard old messages.
- **Concurrency.** Specify the number of concurrent threads for selected accounts. For example, 3 starts three concurrent threads and three accounts migrations start simultaneously.
- **Message logging.** Enable this option to log the message which failed to get migrated.

Click **Next**. A confirmation dialog appears. Click **OK** to begin the migration process.

Important: Users can continue to work in Lotus Notes while their mail is being imported, although any operation they do after that mailbox folder has been imported will not be picked up by the Zimbra server. To ensure that the imported mailbox is consistent with the old mailbox, we recommend informing users that their mailboxes will be unavailable over some scheduled downtime period.

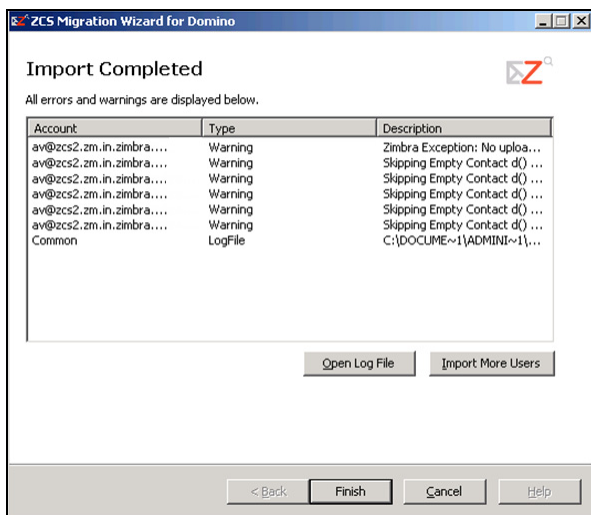
The **Import In Progress** screen displays the import progress.



14. When the import is complete, the **Import Completed** dialog displays any errors. If errors or warnings appear, review the **Description** column and take appropriate action.
- For details about the migration process, click **Open Log File** to view details.

Note: You can also view this log file later in the temp folder of the user used to run the migration tool. The file name appears as *m2l.log*.

- Use **Import More Users** to re-run the import on a different batch of users. You might do this to import users from another domain, for example.
- Click **Finish** to close the ZCS Migration Wizard.



Registry Keys for the ZCS Migration Wizard

Below is a list of all the registry keys for the ZCS Migration Wizard.

Important: Before you change any registry key values, be sure to create a backup of the original registry key values.

Key Name	Value Type	Description
The following keys are located under HKCU\Software\Zimbra\DominoMigration		
HostName	REG_SZ	Default host name of the mailbox server.
Port	REG_DWORD	Default port on which the administrator and non-administrator services run.
SecureCon	REG_DWORD	Default status for using a secure connection.
The following keys are located under HKCU\Software\Zimbra:		
MaxAttachSizeMB	REG_DWORD	By default, messages larger than 10 MB will not be imported. The limit can be changed by modifying the registry. The key value should be specified in megabytes (MB). A value is zero, there is no limit to the size of message attachments.
ErrorThreshold	REG_DWORD	By default, after three consecutive errors the ZCS Migration Wizard will stop. The limit can be changed by modifying the registry. If the value is zero, the ZCS Migration Wizard will not stop.

